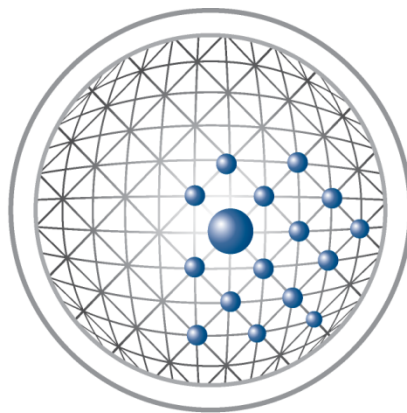


DistriBrute v2.2.0.2 Upgrade Instructions



DistriBrute

Enterprise Desktop Deployment

Version 2.2.0.2
Upgrade Instructions

DistriBrute Upgrade Instructions

The software described in this instruction is furnished under a license agreement and may be used only in accordance with the terms of the agreement.

© 2008-2010 4M88 BV. All Rights Reserved. Any technical documentation that is made available by 4M88 BV is the copyrighted work of 4M88 BV and is owned by 4M88 BV.

NO WARRANTY. The technical documentation is being delivered to you AS-IS and 4M88 BV makes no warranty as to its accuracy or use. Any use of the technical documentation or the information contained therein is at the risk of the user. Due to the inherently complex nature of computer software, 4M88 does not warrant that the 4M88 software is error-free, will operate without interruption, is compatible with all equipment and software configurations, or will otherwise meet your needs. The content of this documentation is furnished for informational use only, is subject to change without notice, and should not be construed as a commitment by 4M88 BV. 4M88 BV assumes no responsibility or liability for any errors or inaccuracies that may appear in this documentation. 4M88 reserves the right to make changes without prior notice. No part of this publication may be copied without the express written permission of 4M88 BV, Postbus 687, 2130 AR Hoofddorp, The Netherlands.

4M88, the 4M88 logo, DistriBrute and the DistriBrute logo are trademarks of 4M88 BV. Microsoft Windows XP, Windows Vista and Windows 7 are registered trademarks of Microsoft Corporation. Other product or brand names mentioned in this manual may be trademarks or registered trademarks of their respective companies and are hereby acknowledged.

Contents

- 1. INTRODUCTION4**
- 2. UPGRADE INSTRUCTIONS5**
 - UPGRADE PROCEDURE 5
 - UPDATING THE CORE AND PXE BOOT IMAGES..... 7

Introduction

1

The upgrade from DistriBrute version 2.0.1.4 (and higher versions) to version 2.2.0.2 contains reporting ability, scheduling functionality as well as bug fixes. With version 2.2.0.2 reports can be generated which include detailed information about downloads and installations. The following link provides a complete list of all new features, improvements and bug fixes:

<http://www.4m88.com/changelog.html>

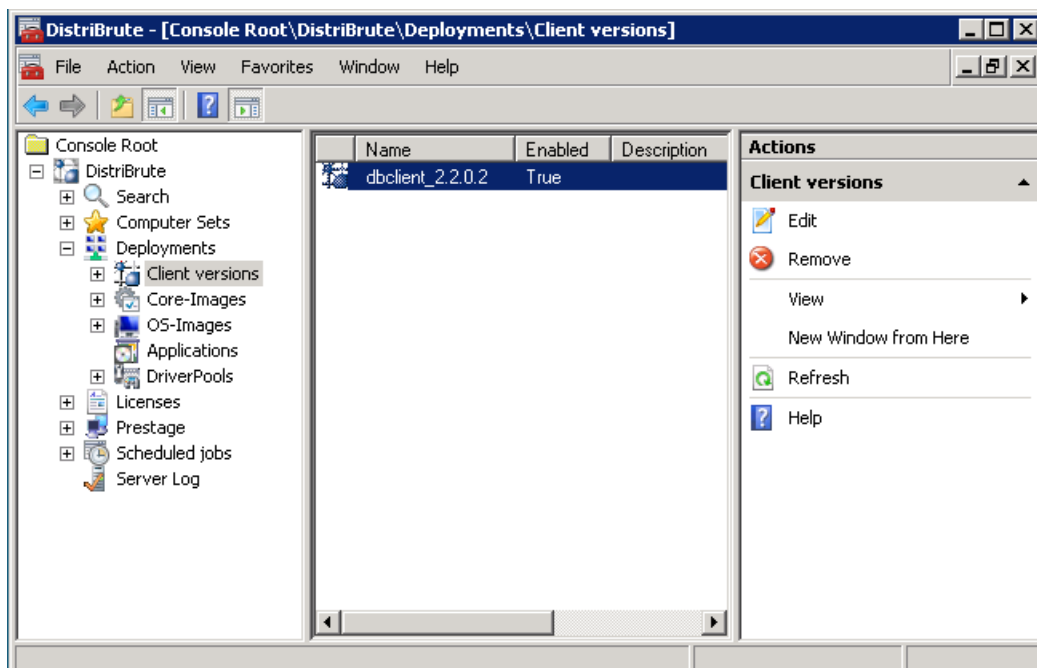
The following chapter describes the upgrade instruction in detail.

Upgrade Instructions

Upgrade procedure

The upgrade procedure works for all DistriBrute versions from v2.0.1.4 to v2.2.0.1.

- Download the DistriBrute_Update_v2.2.0.2.zip from the 4M88 website: <http://www.4m88.com/software.html>
- Extract the ZIP file in a temporary directory on the DistriBrute server.
- Execute the 'DistriBrute_Components_Update_V2202.exe' file.
- Replace¹ (in the installation path of DistriBrute) the old 'DistriBrute-Injector.exe' with the new 'DistriBrute-Injector.exe' from the temporary directory. The new injector supports the WAIK 3.0. **Replacing the injector is not mandatory.**
- Open the DistriBrute MMC and make the following adjustments:
 - Enable the new client and attach it to all computersets



¹ Replacing the injector is not necessary if you have already installed DistriBrute v2.2.0.1

The new client is not immediately available in the MMC. Hashing takes place after the first data sync of the server. It can take a few minutes before the new client appears in the MMC. Press 'Refresh' in the action console to check the availability of the new client.

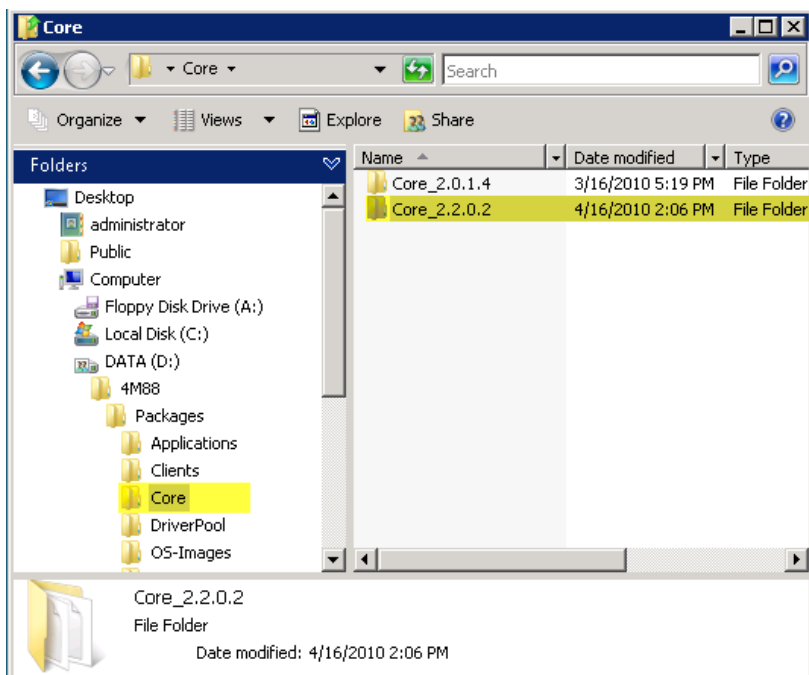
- Enable the 'Core' package and attach it to all computersets. The old 'Core' is backwards compatible.

All DistriBrute clients update themselves automatically during the first client data sync or when the desktop / DistriBrute client service is restarted.

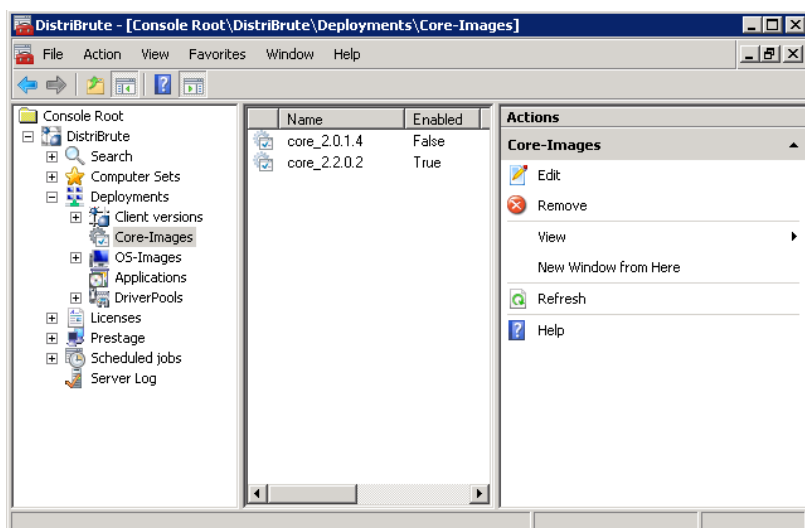
Updating the core and PXE boot images

Make sure that the latest² DistriBrute client is active on all computers before updating the core and pxe boot images.

You can create new WAIK 3.0 images using the new injector. Follow the standard procedure to create PXE boot and Core images from the DistriBrute Installation manual (page 20 -21). Place the new Core image in the Core directory and perform a server data sync.



The new Core will appear in a few minutes after forcing a server data sync. Replace the old PXE boot image in the WDS MMC with the new PXE boot image (WAIK 3.0). **Updating the boot images is not mandatory.**



² DistriBrute client v2.0.1.4 can't handle multiple core images in the package source folder. For this reason the client must be updated first before adding a new core image to the package source directory.